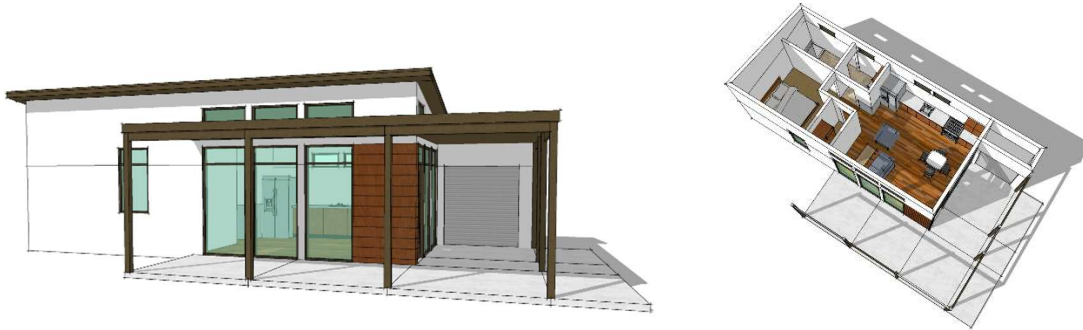


The Seaside ADU (Accessory Dwelling Unit) Model BS 360 512 ADU



Eco-Smart is pleased to introduce its Seaside ADU 512 Model.

- This model was designed to fit comfortably in a backyard environment where zoning and setback requirements permit.
- The one bedroom / one bath ADU design contains 480 square feet of habitable area and accommodates a full kitchen, stackable washer and dryer, an 8' x 8' storage locker, and spacious patio canopy.
- A light weight “structural insulated panel system” (SIPS) allows for our kit to be assembled in as little as 6 hours by a crew of about 3 people with just basic carpentry or handyman skills and no special equipment.
- The SIPS kit can be built slab on grade, on an elevated deck, or crawl space constructed of conventional materials.
- Our durable panels are factory fabricated with steel faces (automotive grade finish) with integral 4” and 6” ESP foam cores. The laminated panels provide walls and roofs that are superior in strength to conventional wood or metal frame construction at 1/3 the weight. The wall and roof panel achieve R-16 and R-24 insulation values respectively.
- Our eco-friendly energy efficient panels are moisture resistant, rot proof, hypoallergenic, and will keep you safe and comfortable throughout the year.
- The panels are numbered to correspond to provided assembly plans with precut window and door openings to minimize job site waste and clean up.
- The interior and exterior surfaces can be left exposed or finished with common materials such as siding, stucco or brick to suit your design preference.

Recently approved for the development and construction of our Seaside 512 ADU by the City of Seaside, CA. As part of a City sponsored Affordable Housing Demonstration Project, the ADU was intended to be showcased next to a conventionally built (frame constructed) unit.

However, during the bid process, the conventionally built unit priced out almost double the cost of our ADU. Needless to say, the City recognizing they could almost purchase two panelized ADU’s for the price of one “stick” built structure, elected to award two lower cost units and abandon their original proposal.

